
REPUBLIC OF MOLDOVA

MOLDOVA RURAL CONNECTIVITY PROJECT - P180153

NATIONAL ROAD ADMINISTRATION

Minutes of Pre-Bid Meeting

Rehabilitation Works on Corridor 24:

Lot 1: Contract MRCP/W2/01: Road G133: G132 – Tartaul – Gotești –R34, km 0+000 - km 14+920 (Section 1) and Road G132: R35 – Baimaclia – Taraclia de Salcie – R32, km 14+220 - km 20+350 (Section 2).

Lot 2: Contract MRCP/W2/02: Road G131: R35 - Bobocica - G132, km 0+000 - km 12+000 (Section 1) and Road G131: R35 – Bobocica - G132, km 12+000- km 22+110 (Section 2)

Location: National Road Administration (NRA)
Bucuriei 12A str., MD – 2004, 4th floor,
Chișinău, Republic of Moldova

Time: 10:00 am (local time)

Date: June 18, 2026

Attendance:

Client's representatives:

- Mrs. Natalia CAPAȚÎNA – Chief of Project Implementation Unit, National Road Administration;
- Mr. Ruslan ANII – Contract monitoring consultant, Project Implementation Unit, National Road Administration.

The List of Participants filled in and signed by firms' or Joint Ventures' representatives is attached hereto (See Annex A).

Opening:

Mrs. Natalia CAPAȚÎNA has welcomed all the participants and has introduced the reason of the meeting. Further she has pointed out to the participants that the event was held in accordance with para 7.4, Section I - Instructions to Bidders, Bidding Documents, aimed at clarifying issues and answering questions on any matters that may be raised at this stage.

Attendees have been informed that the meeting's presentation does not replace or modify any provisions of the bidding document mentioned above. In case of contradiction between the presentation and the bidding document, the terms and conditions of the bidding document take precedence.

Mr. Ruslan ANII has continued the presentation on the scope of works and has made a brief overview on the geometrical parameters of the roads, major structural works and main estimated quantities for the respective works contract.

Discussions:

Participants raised their questions and some of them were further discussed and answered in general lines. Mrs. Natalia CAPAȚÎNA has specified that all the questions will be formally answered through the Clarification Document approved by the Bank, that will be made public to all interested bidders.

Closing:

At the end, Mrs. Natalia CAPAȚÎNA thanked the representatives of firms for their attendance, and wished them good luck in the bidding process.

Rehabilitation Works on Corridor 24:

Lot 1: Contract MRCP/W2/01: Road G133: G132 – Tartaul – Gotești –R34, km 0+000 - km 14+920 (Section 1) and Road G132: R35 – Baimaclia – Taraclia de Salcie – R32, km 14+220 - km 20+350 (Section 2).

Lot 2: Contract MRCP/W2/02: Road G131: R35 - Bobocica - G132, km 0+000 - km 12+000 (Section 1) and Road G131: R35 – Bobocica - G132, km 12+000-km 22+110 (Section 2)

Note:

The information presented during the Pre-Bid meeting is not exhaustive, it provided only a summary of the most important issues and clauses from Bidding Documents, therefore in preparing their Bids, the bidders should follow the complete set of Bidding Documents, including answers to the Requests for Clarification and Amendments, if appropriate.

Annexes:

- Annex A – List of Participants at the Pre-Bid Meeting.
- Annex B – Meeting’s presentation.

Rehabilitation Works on Corridor 24:

Lot 1: Contract MRCP/W2/01: Road G133: G132 – Tartaul – Gotești –R34, km 0+000 - km 14+920 (Section 1) and Road G132: R35 – Baimaclia – Taracia de Salcie – R32, km 14+220 - km 20+350 (Section 2).

Lot 2: Contract MRCP/W2/02: Road G131: R35 - Bobocica - G132, km 0+000 - km 12+000 (Section 1) and Road G131: R35 – Bobocica - G132, km 12+000-km 22+110 (Section 2)

Annex A
List of Participants at the Pre-Bid Meeting

Annex A

List of Participants at the Pre-Bid Meeting

RFB No. MRCP/W2/01-02

Rehabilitation Works on Corridor 24:

Lot 1: Contract MRCP/W2/01: Road G133: G132 – Tartaul – Gotești –R34, km 0+000 - km 14+920 (Section 1) and Road G132: R35 – Baimaclia – Taraclia de Salcie – R32, km 14+220 - km 20+350 (Section 2).

Lot 2: Contract MRCP/W2/02: Road G131: R35 - Bobocica - G132, km 0+000 - km 12+000 (Section 1) and Road G131: R35 – Bobocica - G132, km 12+000-km 22+110 (Section 2)

Pre-Bid Meeting held on June 18th, 2026 at S.A. „Administratia Nationala a Drumurilor” (National Road Administration), 4th floor, Room 400, Bucuriei 12A str, Chisinau, MD – 2004, Republic of Moldova

No.	Name of Bidder	Country of Bidder	Name of Bidder's Representative	Signature of Representatives
1	<i>Irinda Prim</i>	<i>Republic of Moldova</i>	<i>Lozovan Iie</i>	<i>[Signature]</i>
2	<i>Strabag SRL</i>	<i>Rep. of Moldova</i>	<i>Dalca Valentina</i>	<i>[Signature]</i>
3				
4				
5				
6				
7				

NRA'S REPRESENTATIVE:

Name: *Nikulche Alina*

Signature: *[Signature]*

Annex A

List of On line - Participants at the Pre-Bid Meeting

RFB No. MRCP/W2/01-02

Rehabilitation Works on Corridor 24:

Lot 1: Contract MRCP/W2/01: Road G133: G132 – Tartaul – Gotești –R34, km 0+000 - km 14+920 (Section 1) and Road G132: R35 – Baimaclia – Taraclia de Salcie – R32, km 14+220 - km 20+350 (Section 2).

Lot 2: Contract MRCP/W2/02: Road G131: R35 - Bobocica - G132, km 0+000 - km 12+000 (Section 1) and Road G131: R35 – Bobocica - G132, km 12+000-km 22+110 (Section 2)

Pre-Bid Meeting held on June 18th, 2026 at S.A. „Administratia Nationala a Drumurilor” (National Road Administration), 4th floor, Room 400, Bucuriei 12A str, Chisinau, MD – 2004, Republic of Moldova

No.	Name of Bidder	Country of Bidder	Name of Bidder's Representative
1	Automagistral-Pivden LLC	Ukraine	Lesia Bilolutska
2	Automagistral-Pivden LLC	Ukraine	Maksym Baranov
3	Automagistral-Pivden LLC	Ukraine	Oleksandr Yakushyn
4	Automagistral-Pivden LLC	Ukraine	Stepan Derevenskyi
5	Automagistral-Pivden LLC	Ukraine	Adrian Bejenaru
6	LIMITED LIABILITY COMPANY "ROSTDORSTROY"	Ukraine	Mykola Romaniv
7			

NRA'S REPRESENTATIVE:

Name: Nikulche Ahina

Signature: [Handwritten Signature]

Rehabilitation Works on Corridor 24:

Lot 1: Contract MRCP/W2/01: Road G133: G132 – Tartaul – Gotești –R34, km 0+000 - km 14+920 (Section 1) and Road G132: R35 – Baimaclia – Taraclia de Salcie – R32, km 14+220 - km 20+350 (Section 2).

Lot 2: Contract MRCP/W2/02: Road G131: R35 - Bobocica - G132, km 0+000 - km 12+000 (Section 1) and Road G131: R35 – Bobocica - G132, km 12+000-km 22+110 (Section 2)

Annex B

Pre-Bid Meeting's Presentation

Republic of Moldova
**The Ministry of Infrastructure and Regional
Development**



J.S.C. "National Road Administration"

Moldova Rural Connectivity Project
Rehabilitation Works on Corridor 24



Pre-Bid Meeting

MRCP/W2/01-02

June 18, 2026

- This presentation does not replace or modify any provisions of the bidding document mentioned above.
- In case of contradiction between this presentation and the bidding document, the terms and conditions of the bidding document take precedence.

**D
I
S
C
L
A
I
M
E
R**

SOURCE OF FUNDING

Financed by:

- 1) The World Bank and**
- 2) Government of Republic of Moldova**

Borrower: The Government of the Republic of Moldova

Client: JSC “National Road Administration” (S.A. “Administrația Națională a Drumurilor”

The Project is: Moldova Rural Connectivity Project

SELECTION PROCEDURE

Bidding will be conducted through international competitive procurement using Request for Bids (RFB) as specified in the World Bank's "Procurement Regulations for IPF Borrowers- Procurement in Investment Projects Financing; Goods, Works, Non-Consulting and Consulting Services,' dated September 2025 ("Procurement Regulations"), and is open to all eligible Bidders as defined in the Procurement Regulations.

Period of Validity of Bids

**150 calendar days
from the closing
date of the bid.**

SUBMISSION OF BIDS

Original Bid (two separate, sealed envelopes (Technical Part and Financial Part))

1 (one) electronic copy (on USB-stick)

2 (two) printed copies

Each envelope shall contain separately:

- The complete Technical Part (comprising complete technical documentation, Technical Data Sheets and other documents as described in ITB 11.2) and;
- The Financial Part of the Bid enclosed and sealed separately, (comprising the Schedules of Rates and Prices and other documents as described in ITB 11.2) - all as described in ITB 22.1.

Joint Venture

In the case of a joint venture, all members shall be jointly and severally liable for the execution of the entire Contract in accordance with the Contract terms.

The JV shall nominate a Representative who shall have the authority to conduct all business for and on behalf of any and all the members of the JV during the Bidding process and, in the event the JV is awarded the Contract, during contract execution.

Bids submitted by a JV shall include in the Technical Part a copy of the Joint Venture Agreement entered into by all members. Alternatively, a letter of intent to execute a Joint Venture Agreement in the event of a successful Bid shall be signed by all members and submitted with the Bid, together with a copy of the proposed Agreement.

Maximum number of members in the JV shall be: 3 (three).

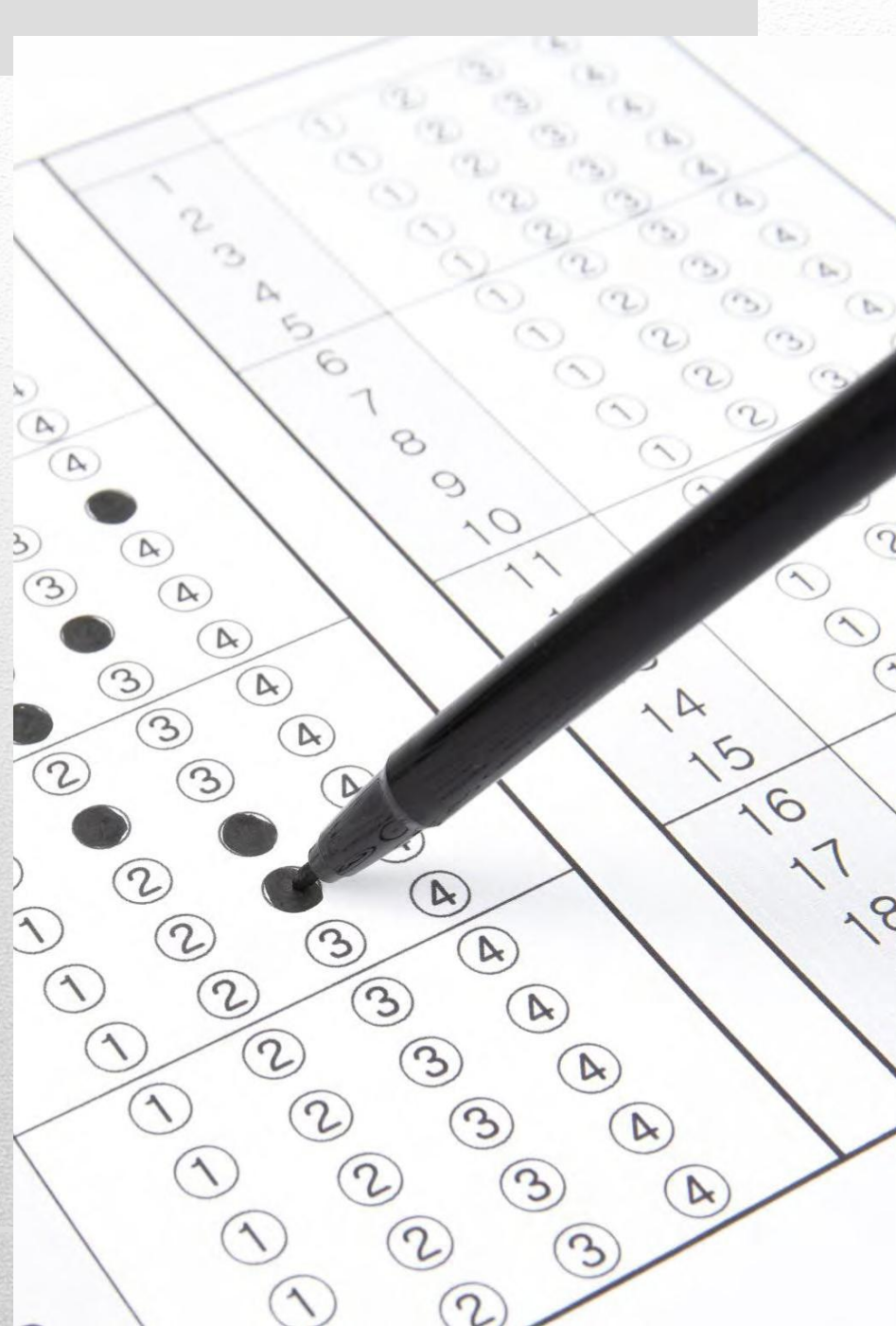
Subcontracting

Contractor's proposed subcontracting:
Maximum percentage of subcontracting permitted is: **30%** of *the total contract amount*.

Bidders proposing to subcontract shall specify in Section IV- Bidding Forms, the activity (ies) or parts of the Works to be subcontracted along with complete details of the subcontractors.

Evaluation of Bids

- Qualification
- Evaluation of Technical Proposal
- Evaluation of Financial Proposal
- Combined Evaluation



QUALIFICATION REQUIREMENTS

Bidder's qualification will be assessed in accordance with the Qualification Criteria included in Section III of the Bidding Documents.

Only substantially responsive bids submitted by eligible and qualified bidders shall proceed to the detailed technical evaluation specified in ITB 32.

Qualification



Evaluation of Technical Part of Bids

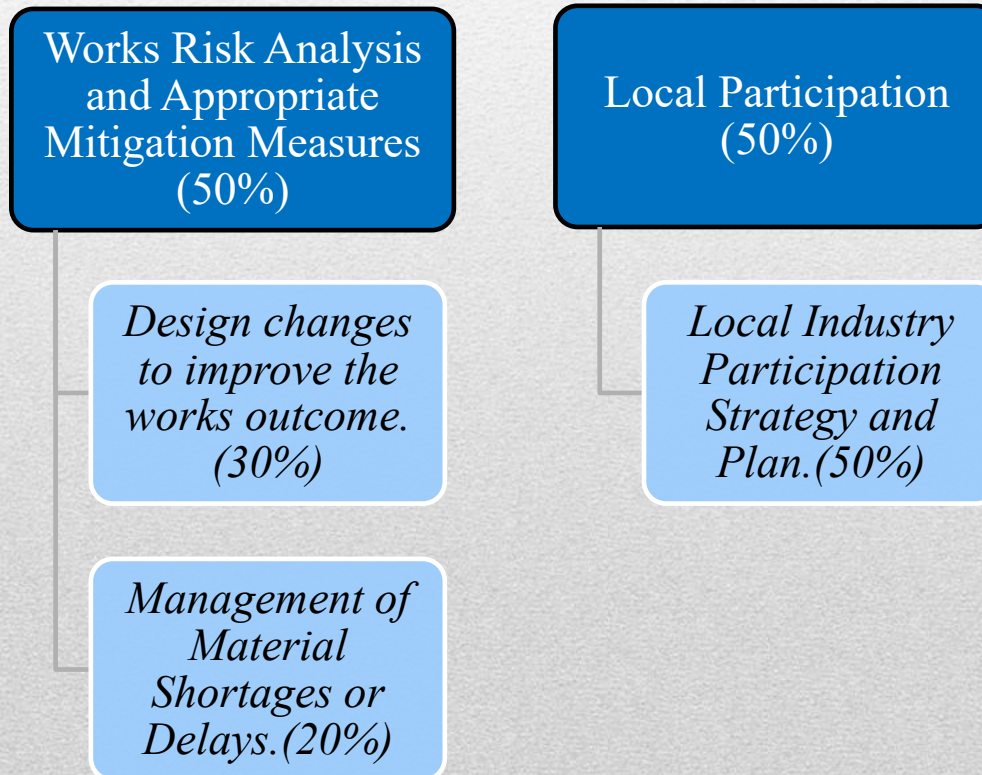
The information provided in response to the Technical Implementation Requirements will be evaluated using the criteria listed below, which will each be assessed on its merits and evaluated using the Pass/Fail system. If the information is not conclusive, clarification may be sought from the Bidder.

	Technical Implementation Requirements		Pass/Fail/Comment
	Components	Sub-criteria	
1	The Bidder/ Contractor	Presence of Project Agreement between JV Partners	
		Presentation of Roles and Responsibilities among JV Partners	
2	Site Organization	Location of Site Camps Depots	
		Location of asphalt plant and distance from Site	
		Means of Communication	
3	Method Statement	Sub-grade / earthworks construction	
		Sub-base construction work	
		Cement stabilised base-course preparation and construction process	
		Asphalt pavement construction process	
4	Materials Availability	Identification and Indications of source(s) of materials to be used	
5	Mobilization Schedule	Mobilization Schedule Gantt chart: comprehensiveness of the list of pre-construction activities	
		Mobilization Schedule Narrative: description of sequencing, phasing, assumptions, limitations and remedies.	
6	Construction Schedule	Division of Works into appropriate construction sections and stages	
		Utilization of equipment, material and personnel	
		Bar chart sub-divided into sections	
		Logic of sequence of activities shown against time, with linkages with related Resource Work Programme showing contractors equipment, resources allocation for various stages, major plant, etc.	
7	Quality Control Program	System Description and Goals	
		QC Organizational Structure	
		Quality Control Duties. Auditing & Training	
		Laboratories Reporting	
8	ESHS Management Strategies and Implementation Plans (ESHS-MSIP)	Environmental and Social Management Plan – Corridor 24	
		Site-Specific ESMP	
		Resettlement Policy Framework	
		Labor Management Plan	
9	Organizational Structure	Stakeholder Engagement Plan.	
		Contractor's Representative and Key Personnel	
10	Local Labour	Equipment	
		Bidder's commitment to allocate 30% of total labour cost to local labour	

Technical Factors

The score to be given for technical factors and sub factors out of (hundred percent) 100% are as follows:

The technical factors and sub-factors listed below will be used to identify and score additional advantages (more than the minimum) of those bids that passed the earlier Technical Evaluation. Their corresponding weights in % are:



The proposed measures of the successful Bidder for these technical factors will be added to the Works Requirements prior to Contract Signing.

Detailed description of these technical factors are provided Section III, Clause 3 of the BDs.

Financial Evaluation

The Employer will evaluate and compare the Bids that have been determined to be substantially responsive.



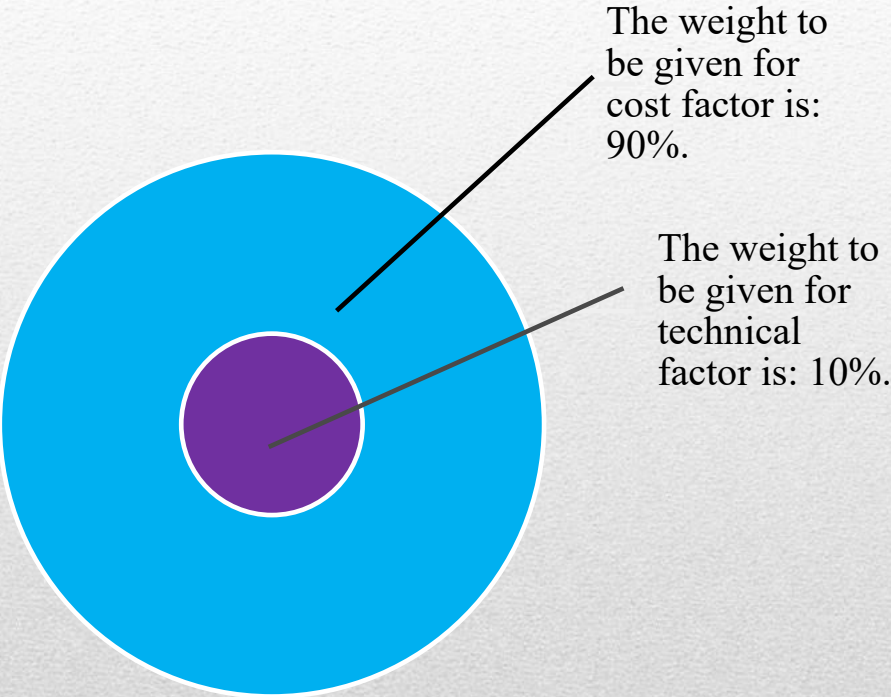
The Financial Parts will be opened by the Employer in the presence of Bidders, or their designated representatives and anyone else who chooses to attend. Bidders who met the eligibility and qualification requirements and whose bids were evaluated as substantially responsive will have their envelopes marked “SECOND ENVELOPE: FINANCIAL PART” opened at the second public opening.

The currency that shall be used for Bid evaluation and comparison purposes to convert at the selling exchange rate all Bid prices expressed in various currencies into a single currency is: *Moldovan Leu*.

The source of exchange rate shall be: *National Bank of Moldova*.

The date for the exchange rate shall be: the date of bids opening.

Evaluation of Combined Technical and Financial Parts



OTHER

A Bid-Securing Declaration shall be required (ITB 19.1).

(To complete the Form of Bid-Securing Declaration in Section IV Bidding Forms).

Bid Security is NOT required!!!



The prices quoted by the Bidder **shall be subject to adjustment.**

Electronic Bidding is not permitted.

ES Performance Security is NOT required.

Duration of the Contract:

- The contract is expected to start in 2027
- **Time for completion:**
- Lot 1&2: **730 days from the Commencement Date**
+ 1 year DNP

SUPERVISION OF CIVIL WORKS

The Engineer will be notified to the successful tenderer prior to the Commencement Date.

If the Engineer is not available at the date of Contract Agreement or becomes unavailable during the term of the Contract, the Employer exercise Engineer's Duties and Authorities on an interim basis, in order not to delay the Contract performance.

Tax and Custom Facilities

“In accordance with the provisions of the Law no. 176/2024 and 177/2024, the import of goods and services intended for the implementation of the Project are exempt from VAT without the right to deduct, excise duty, customs duties, fee for customs procedures and tax for goods, that in the process of use, cause environmental pollution, and supplies of goods and services intended for implementation of the Project are subject to exemption of VAT with the right to deduct, excise duty, tax for goods, that in the process of use, cause environmental pollution. The tax exemption mechanism for application of fiscal and custom incentives is provided in the Government Decision no. 114/2025”.

Environmental & Social Requirements

- The Contractors should follow a set of environmental guidelines for contractors prescribed by the ESMP;
- Contractors should submit, as part of their bid, a site-specific Contractor's Environmental and Social Management Plan (C-ESMP based on ESMP attached to BD, with the detailed description of implementing arrangements) including implementation staff.

Health & Safety Requirements

- A Health and Safety Plan must be prepared and approved prior to any works commencing on site. The H&S Plan must demonstrate the Contractor's understanding of how to manage safety and a commitment to providing a workplace that enables all work activities to be carried out safely. The H&S Plan must detail reasonably practicable measures to eliminate or minimize risks to the health, safety and welfare of workers, contractors, visitors, and anyone else who may be affected by the operations. The H&S Plan must be prepared in accordance with the World Bank's EH&S Guidelines and the relevant Moldova health and safety legislation.

Scope of Works

The rehabilitation of Corridor 24 comprises three regional roads “G”. The route passes the Cantemir district, as follows:

- **Lot 1:**

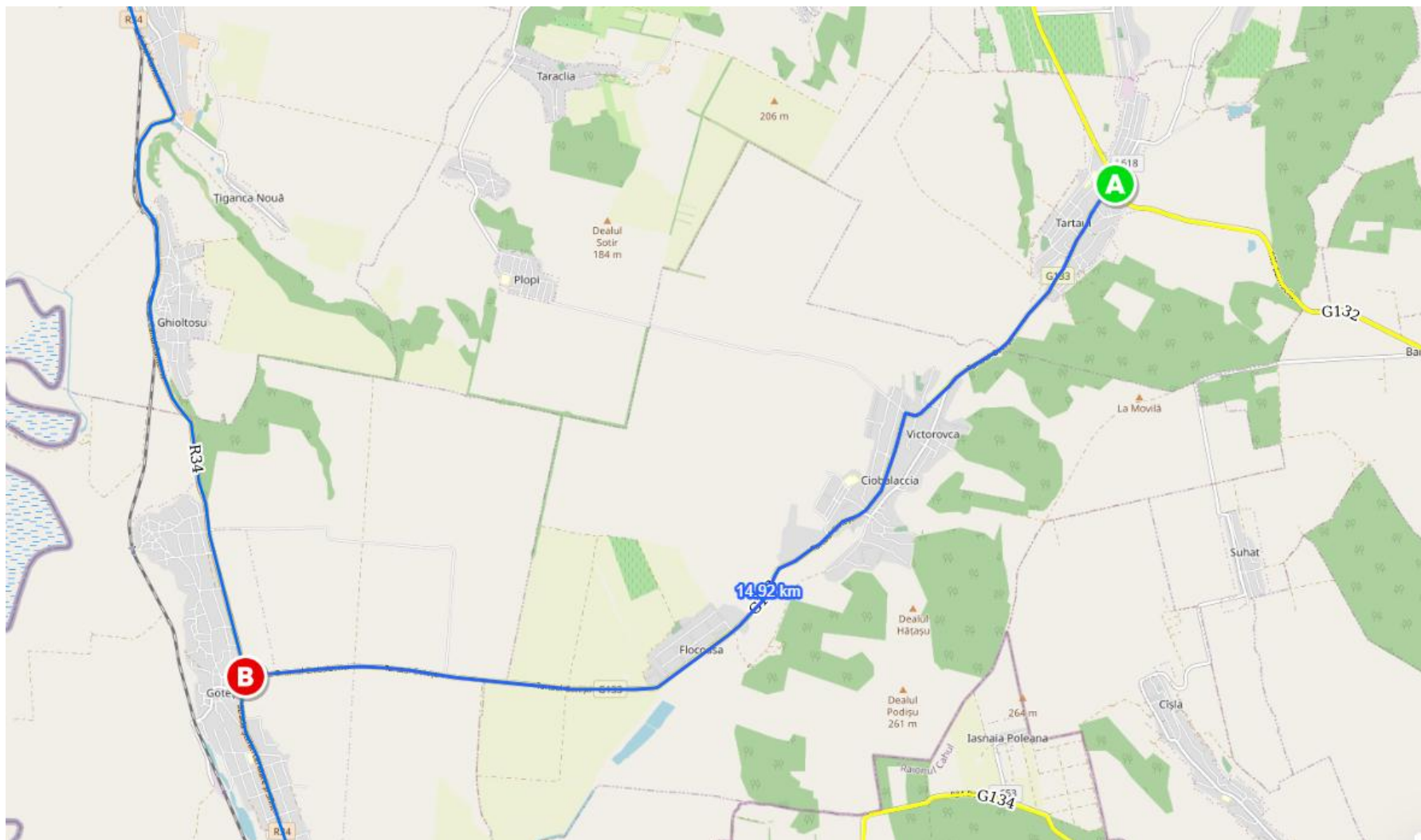
- **Section 1:** Rehabilitation of G133 road – section km 0+000 – km 14+920. The project starts at the intersection with road G132 (km 14+220) – Tartaul village, and follows through road G133 up to km 14+920 – intersection with republican road R34 (km 100+078), village Gotești. The road passes villages Tartaul, Victorovca, Ciobalaccia and Flocoasa.
- **Section 2:** Rehabilitation of G132, km 14+220 – km 20+350. The project starts at the intersection with road G133 (km 0+000) – Tartaul village, and continues up to km 20+350 – intersection with regional road G131 (km 22+110), village Baimaclia. The road passes villages Tartaul and Baimaclia.

- **Lot 2:**

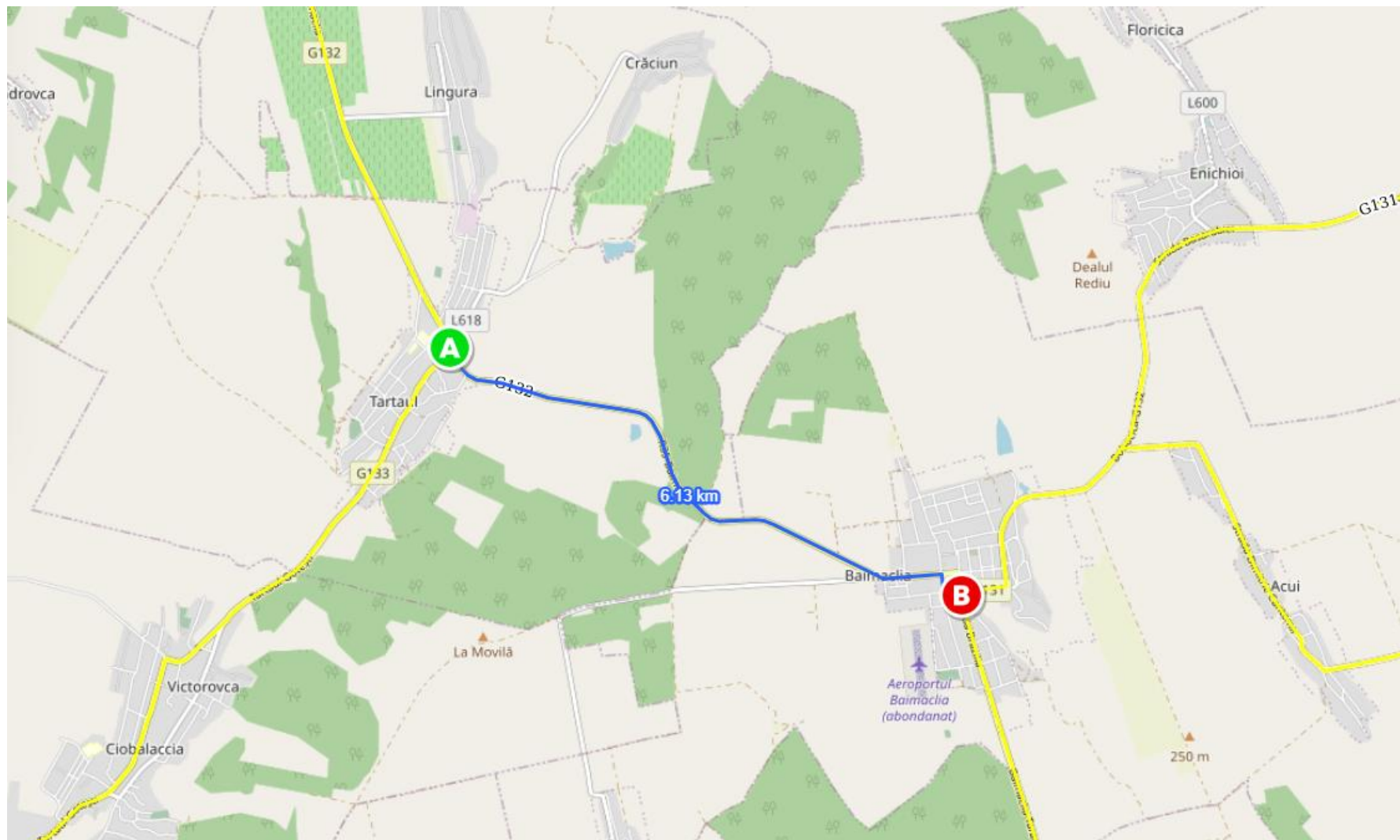
- **Section 1:** Rehabilitation of regional road G131, km 0+000 – km 12+000, and

- **Section 2:** Rehabilitation of regional road G131, km 12+000 – km 22+110. The project starts at the intersection with republican road R35 (km 14+216), Vișniovca village, and follows through road G131 up to km 22+110 – intersection with road G132 (km 20+350) – Baimaclia village. The road passes villages Vișniovca, Bobocica, Enichioi and Baimaclia.

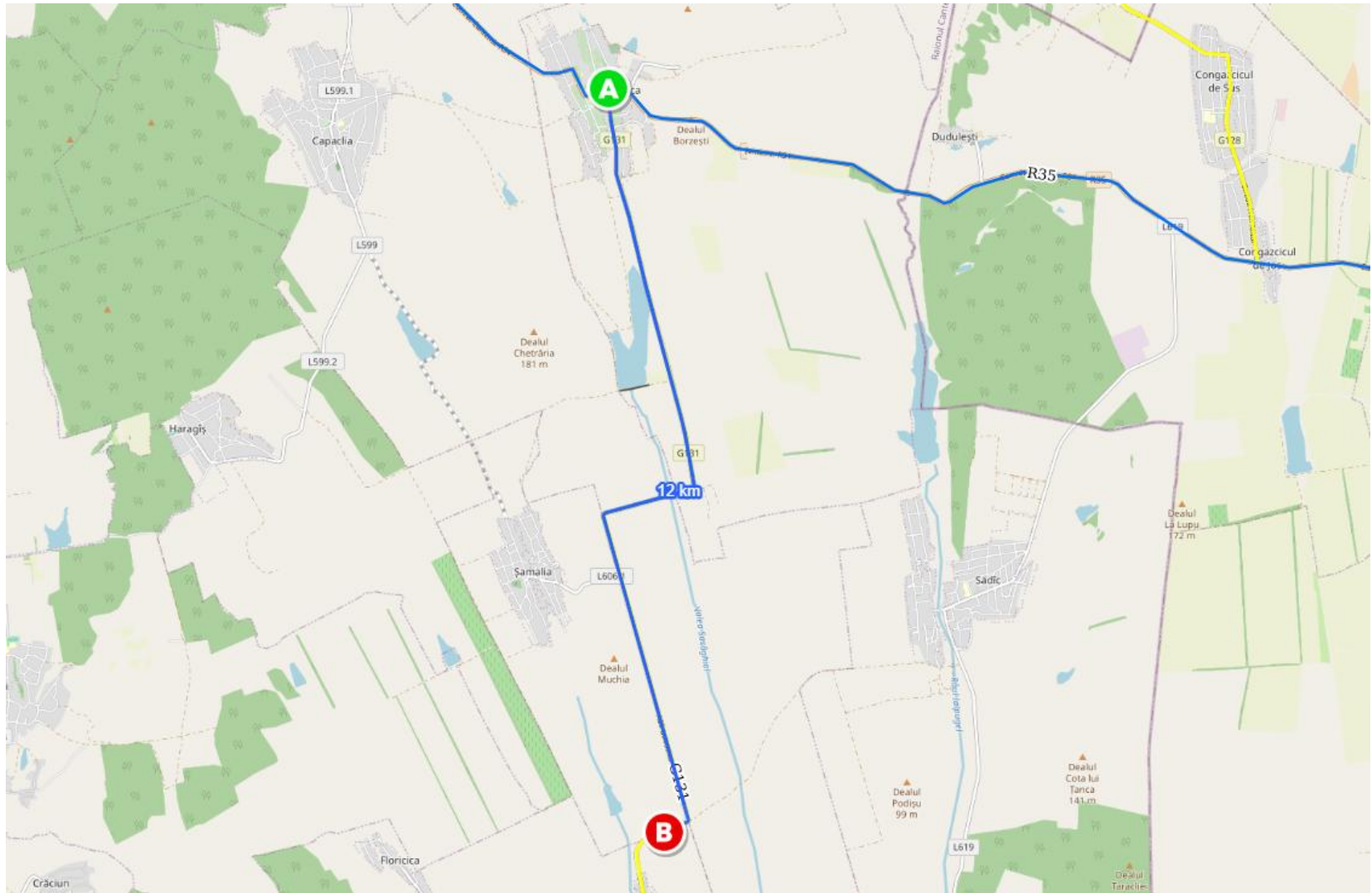
LOT 1: Section 1.1



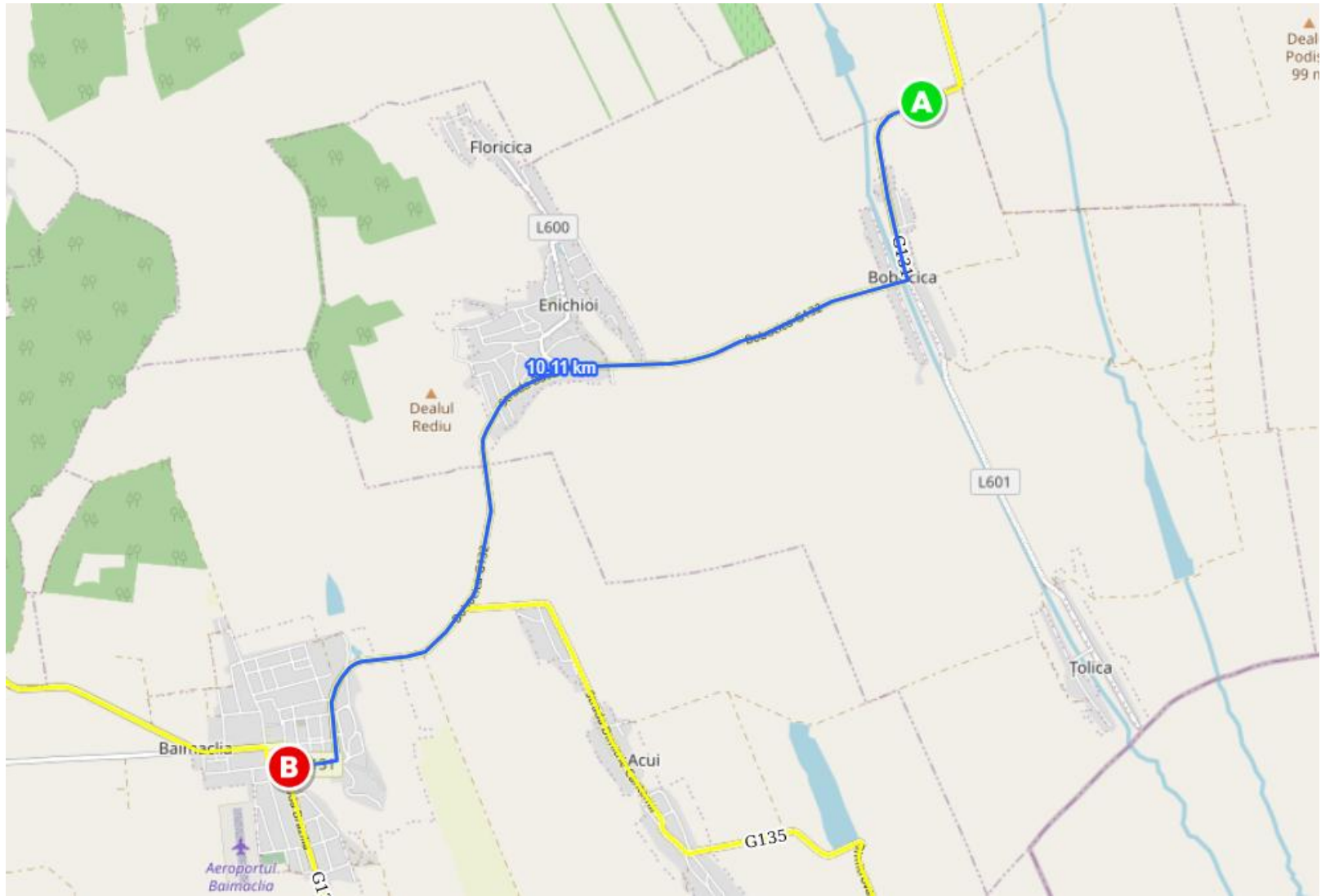
Corridor 24.1, S1.2: G132 R35 – Baimaclia - Taraclia de Salcie - R32, km 14+220 – km 20+350
LOT 1: Section 1.2



LOT 2: Section 2.1

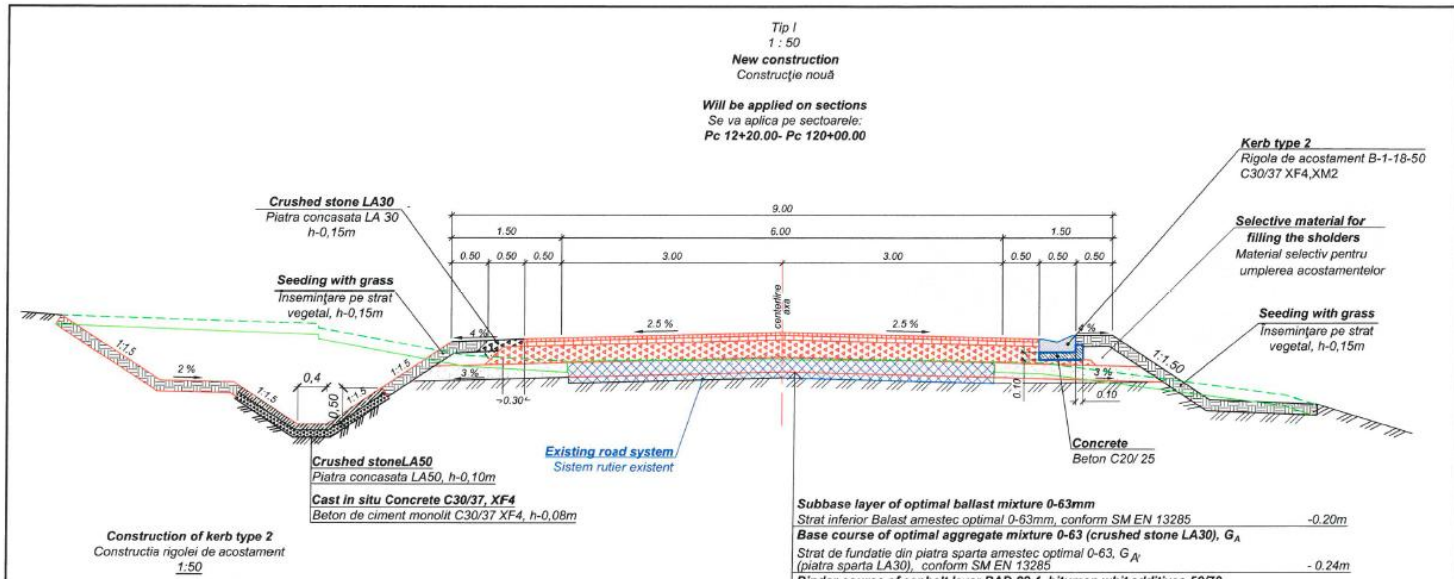


LOT 2: Section 2.2



Corridor 24, G133 G132-Tartaul – Gotesti - R34, G132 R35 – Baimaclia - Taraclia de Salcie - R32 and G131 R35 – Bobocica – G132

Typical Cross Sections



Typical pavement Structure (New Construction)
Total length 22,76 km, 52,7% of total length 43,15 km

Wearing course of asphalt concrete BA16 with polymer modified bitumen PMB 45/80-80, **thickness h-40mm**

Binder course of asphalt layer BAD 22.4 50/70, **thickness h-60mm**

Base course of optimal aggregate mixture 0-63, **thickness h-240mm**

Subgrade course of optimal aggregate mixture 0-63, **thickness 200mm**

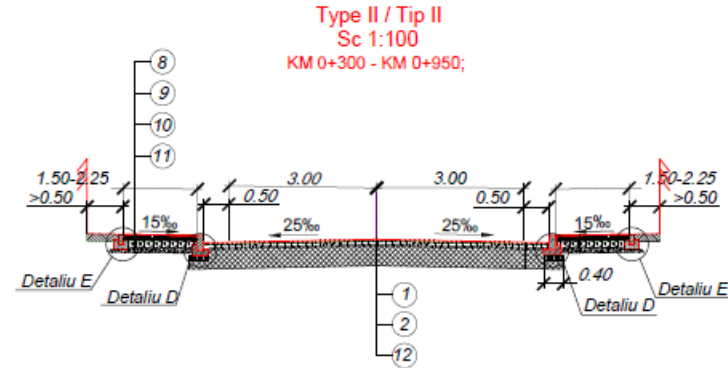
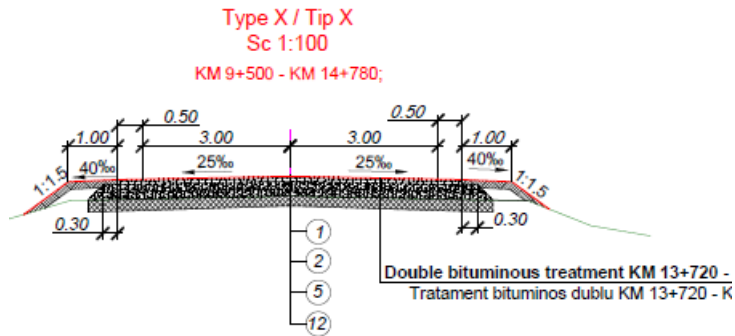
** Tratamentul dublu-bituminos se va fa aplica pe sectoarele:
Pc 56+00 - Pc 65+70
Pc 69+50 - Pc 73+00
Pc 114+50 - Pc 119+50

Verificator de proiecte 082
Buraga Andrei
Domeniile B.3a,b,4
Nr. de înregistrare a anului 045-149 / 2014
Valabil de la 22.12.2021 până la 22.12.2026
Nr. cr. 1024

623/ 2023 - DA					
Updating the execution project regarding the rehabilitation and modernization of the roads that are part of Corridor no.24/ Actualizarea proiectului de execuție privind reabilitarea și modernizarea drumurilor care fac parte din Coridorul nr. 24, R34 - Ciobărlăcia - Tartaul - G132 - Baimaclia - Eritichioi - R35					
SP	V. Sajin	12.23	Sector 1 G131 R35-Bobocica-G132 km 0+000-km 22+110 Sector 1.1 km 0+000-km 12+000	Faza	Planșă
Verificat	V. Sajin	12.23		DE	32
Elaborat	V. Eftodiu	12.23		FSP "UNIVERSINJ" SRL	
Contr. Stand. I.	Grișoreva	12.23	Typical pavement cross sections Profilurile transversale tip a sistemului rutier		

Corridor 24, G133 G132-Tartaul – Gotesti - R34, G132 R35 – Baimaclia - Taraclia de Salcie - R32 and G131 R35 – Bobocica – G132

Typical Cross Sections



**Typical pavement Structure Total length 5,28 km,
12,3% of total length 43,15 km**

Wearing course of asphalt concrete BA16 with polymer modified bitumen PMB 45/80-80, **thickness h-40mm**

Binder course of asphalt layer BAD 22.4 50/70, **thickness h-60mm**

Base course of optimal aggregate mixture 0-63, **thickness h-240mm**

**Typical pavement Structure Total length 0,65 km,
1,5% of total length 43,15 km**

Wearing course of asphalt concrete BA16 with polymer modified bitumen PMB 45/80-80, **thickness h-40mm**

Binder course of asphalt layer BAD 22.4 50/70, **thickness h-60mm**

On some road sections, it is provided with double bituminous treatment

Corridor 24, G133 G132-Tartaul – Gotesti - R34, G132 R35 – Baimaclia - Taraclia de Salcie - R32 and G131 R35 – Bobocica – G132

Main Works

Over 381.000 cubic meter of earth works (embankment fill and excavation);

Over 22.050 cubic meter of cold recycling and stabilized base works (147.000 sq.m)

Over 703.444 square meter of asphalt concrete (79.600 t)

Rehabilitation of 5 bridges (G132, km 14.3; G133, km 1.16, km 3.90, km 8.62; G131, km 13.8), over 90 m

road safety

Over 9.600 linear meter of crash barriers

Over 1.030 pcs of signs

Over 25.000 square meter of road marking

utilities

Over 19.000 linear meters of road lighting

Over 18.000 linear meters of rearrangement of communication lines

Over 1.600 linear meters of rearrangement of water supply

Over 1.900 linear meters of rearrangement of gas pipeline

Over 700 linear meters of rearrangement of underground sewer

drainage

Over 2.090 linear meter of culverts

Over 39.000 linear meter of paved waterway



THANK YOU!